

ITEM NO.	QTY.	PART NO.	DESCRIPTION
1	1	934114-05	Work Cage/Adj. Roller Bumper, Weldment
2	1	833109	Roller, 5.5 x 7 in, White
3	1	934114-02	Adj. Roller Bumper, Shaft
4	1	934114-03	PVC Spacer
5	2	110481	Washer, 3/4" Flat
6	2	110508	Cotter Pin, 1/8" x 2.5" Long
7	2	334103	Top Sliding Bracket, RB934113
8	2	331105	T-bolt, RB934113
9	1	334104	Rear Bracket, RB934114
10	1	934114-04	Support Bracket, RB934114
11	2	110101	Hitch Pin 5/16"
12	1	LB-BEEUSA2	Label, Bee Access USA 2"

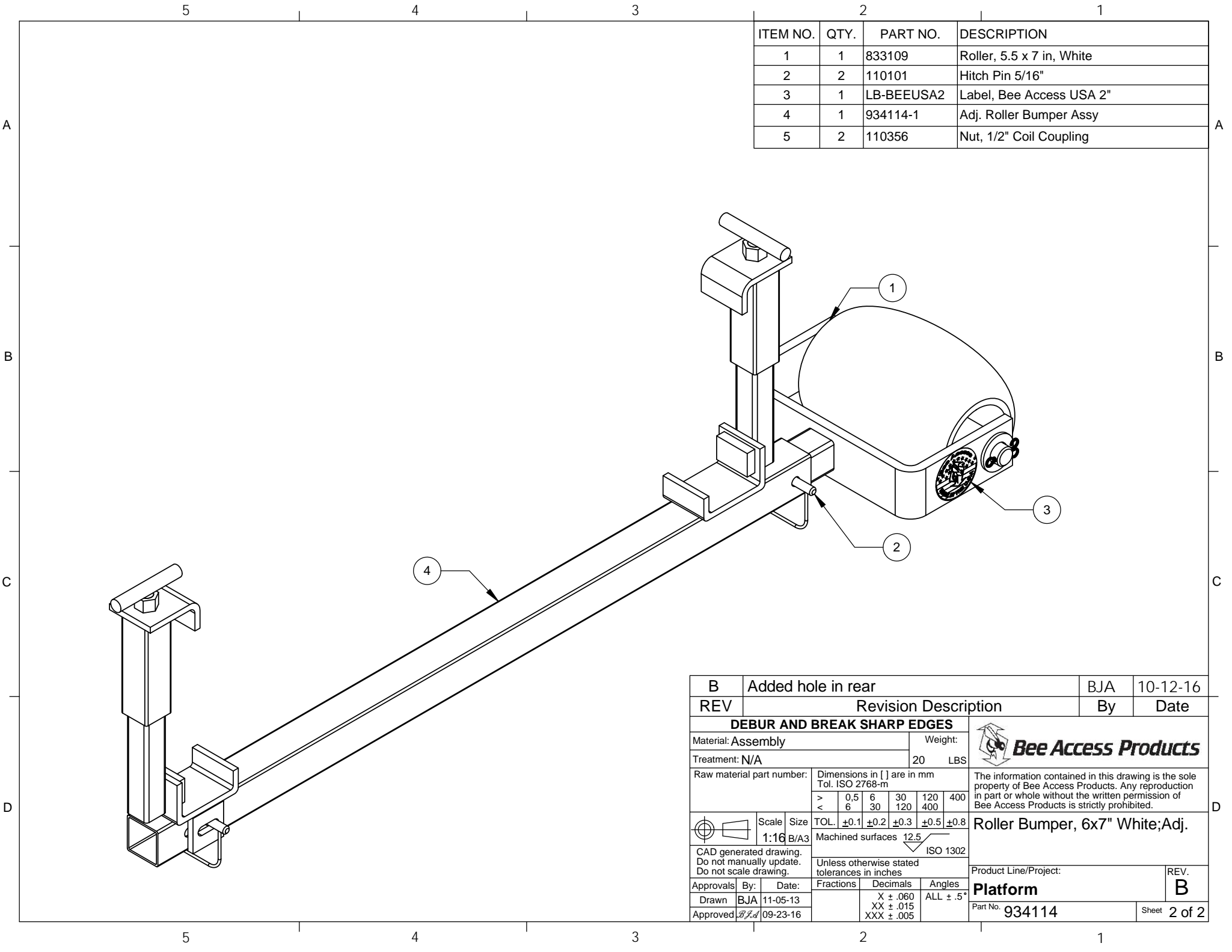
B	Added hole in rear	BJA	10-12-16										
REV	Revision Description	By	Date										
DEBUR AND BREAK SHARP EDGES													
Material: Assembly		Weight: 20 LBS											
Treatment: N/A													
Raw material part number:													
Dimensions in [] are in mm Tol. ISO 2768-m		The information contained in this drawing is the sole property of Bee Access Products. Any reproduction in part or whole without the written permission of Bee Access Products is strictly prohibited.											
<table border="1"> <tr> <td>></td> <td>0,5</td> <td>6</td> <td>30</td> <td>120</td> <td>400</td> </tr> <tr> <td><</td> <td>6</td> <td>30</td> <td>120</td> <td>400</td> <td></td> </tr> </table>				>	0,5	6	30	120	400	<	6	30	120
>	0,5	6	30	120	400								
<	6	30	120	400									
Scale 1:16 B/A3 Size B/A3 TOL. ±0.1 ±0.2 ±0.3 ±0.5 ±0.8 Machined surfaces 12.5 ISO 1302		Roller Bumper, 6x7" White;Adj.											
CAD generated drawing. Do not manually update. Do not scale drawing.		Product Line/Project: Platform											
Approvals By: BJA Date: 11-05-13		REV. B											
Approved: [Signature] 09-23-16		Part No. 934114											
		Sheet 1 of 2											

A
B
C
D


A
B
C
D

5 4 3 2 1

5 4 3 2 1



ITEM NO.	QTY.	PART NO.	DESCRIPTION
1	1	833109	Roller, 5.5 x 7 in, White
2	2	110101	Hitch Pin 5/16"
3	1	LB-BEEUSA2	Label, Bee Access USA 2"
4	1	934114-1	Adj. Roller Bumper Assy
5	2	110356	Nut, 1/2" Coil Coupling

B	Added hole in rear	BJA	10-12-16
REV	Revision Description	By	Date
DEBUR AND BREAK SHARP EDGES			
Material: Assembly		Weight: 20 LBS	
Treatment: N/A		 <p>The information contained in this drawing is the sole property of Bee Access Products. Any reproduction in part or whole without the written permission of Bee Access Products is strictly prohibited.</p>	
Raw material part number:			
Dimensions in [] are in mm Tol. ISO 2768-m > 0,5 6 30 120 400 < 6 30 120 400		Roller Bumper, 6x7" White;Adj.	
Scale Size 1:16 B/A3 Machined surfaces 12,5 ISO 1302			
CAD generated drawing. Do not manually update. Do not scale drawing.		Product Line/Project: Platform	
Approvals By: BJA Date: 11-05-13 Drawn BJA Date: 11-05-13 Approved BJA Date: 09-23-16		REV. B Part No. 934114 Sheet 2 of 2	